

Nivel de Transición por ATC
 Transition Level by ATC

No se ajusta a escala / Not to scale

STAR ERSO 4A / SIRAM 1A

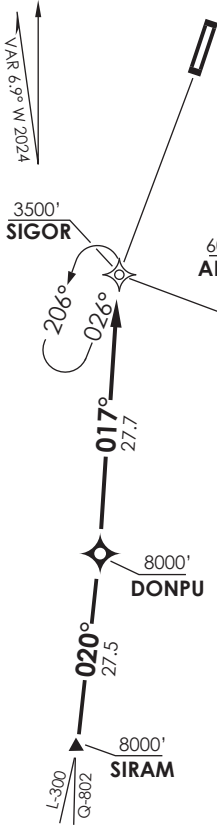
ERISO 4A: Cruzando R084 ARI VOR viraje derecha para interceptar R097 (TR277°) directo a ARI VOR. Cruzar ERSO INT FL210 o superior, D25 ARI FL150 o superior, D11 ARI 10000 FT o superior, ARI VOR 5000 FT o superior, luego según autorización ATC.

ERISO 4A: Crossing R084 ARI VOR right turn to intercept R097 (TR277°) direct to ARI VOR. Cross ERSO INT at or above FL210, D25 ARI at or above FL150, D11 ARI at or above 10000 FT, ARI VOR at or above 5000FT, then according to ATC clearance.

SIRAM 1A: En SIRAM, abandonar AWY para interceptar R199 (TR019°) ARI VOR directo a DONPU INT, luego directo a EDNUR INT para interceptar R206 (TR026°). Cruzar DONPU INT 8000 FT o superior, EDNUR a 5000 FT o superior. Luego según autorización ATC.

SIRAM 1A: At REPUK INT, leave AWY to intercept R199 (TR019°) ARI VOR direct to DONPU INT, then direct to EDNUR INT to intercept R206 (TR026°). Cross DONPU INT at or above 8000 Ft, EDNUR INT at or above 5000 FT. Then according to ATC clearance.

DASA / SECCION AIS-MAP

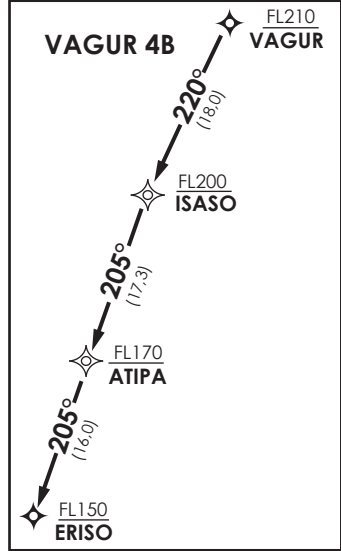


ARICA
 APP 119.9
 TWR 118.5

ATIPA
 FL150
ERISO

VAGUR 4B

FUERA DE ESCALA



Notas
 1.- Requiere aprobación
 RNAV 1 ó RNP1
 2.- Requiere GNSS

Notes
 1.- RNAV 1 or RNP 1 approval
 required
 2.- GNSS required

SIRAM 2B

Nivel de Transición por ATC
 Transition Level by ATC

No se ajusta a escala / Not to scale

STAR VAGUR 4B / SIRAM 2B RNAV

VAGUR 4B: Desde VAGUR proceder via ISASO - ATIPA - ERISO, viraje dercha para continuar via AR390 - AR270 - AR220 - BOLUN. Cruzar VAGUR FL210 o superior, ISASO FL200 o superior, ATIPA FL 170 o superior, ERISO FL150 o superior, AR390 FL120 o superior, AR270 7000 FT o superior, AR220 6000 FT o superior, BOLUN 5000 FT o superior, luego según autorización ATC.

VAGUR 4B: From VAGUR proceed via ISASO - ATIPA - ERISO, right turn to continue via AR390 - AR270 - AR220 - BOLUN. Cross VAGUR at or above FL210, ISASO at or above FL200, ATIPA at or above FL170, ERISO at or above FL150, AR390 at or above FL120, AR270 at or above 7000 FT, AR220 at or above 6000 FT, BOLUN at or above 5000 FT, then according to ATC clearance.

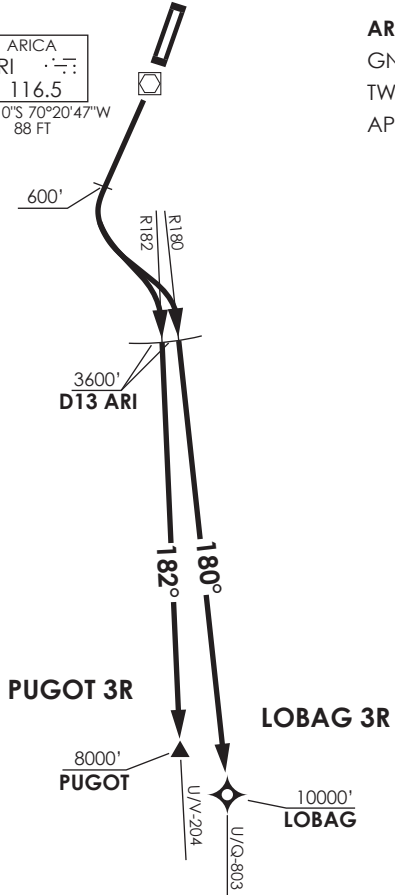
SIRAM 2B: Desde SIRAM proceder via DONPU - SIGOR. Cruzar SIRAM y DONPU 8000 FT o superior, SIGOR 3500 FT o superior, luego según autorización ATC.

SIRAM 2B : From SIRAM proceed via VUKOD - SIGOR. Cross SIRAM and DONPU at or above 8000 FT, SIGOR at or above 3500 FT then according to ATC clearance.

↑
 VAR 6.9° W 2024

ARICA
 ARI
 D 116.5
 18°22'10"S 70°20'47"W
 88 FT

ARICA
 GNDC 121.9
 TWR 118.5
 APP 119.9



MNM Razón ASC:
 MNM Climb Rate:
 270 FT/NM TIL D13

Altitud de Transición 10000FT
 Transition Altitude 10000FT

No se ajusta a escala / Not to scale

LOBAG 3R / PUGOT 3R RWY20

LOBAG 3R: Ascender en RWY HDG hasta 600 FT, viraje izquierda para interceptar R180 ARI VOR directo a LOBAG para interceptar AWY. Cruzar D13 S ARI VOR 3600 FT o superior, LOBAG 10000 FT o superior, luego según autorización ATC.

LOBAG 3R: Climb on RWY HDG until 600 FT, turn left to intercept R180 ARI VOR direct to LOBAG to intercept AWY. Cross D13 S ARI at or above 3600 FT, LOBAG at or above 10000 FT, then according to ATC clearance.

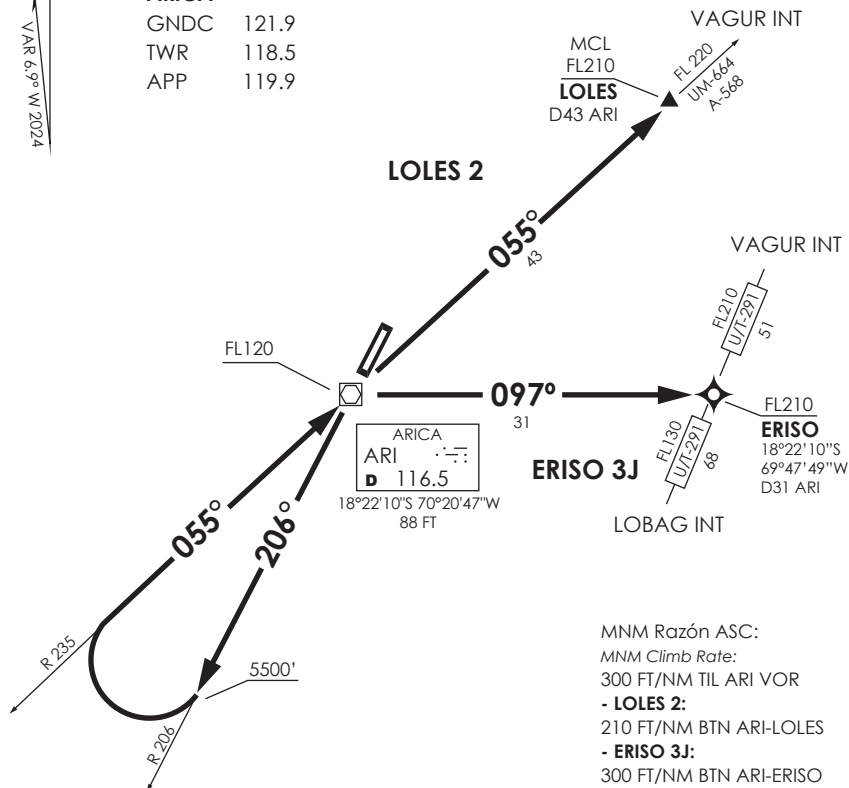
PUGOT 3R: Ascender en RWY HDG hasta 600 FT, viraje izquierda para interceptar R182 ARI VOR directo a PUGOT para interceptar AWY. Cruzar D13 S ARI VOR 3600 FT o superior, PUGOT 8000 FT o superior, luego según autorización ATC.

PUGOT 3R: Climb on RWY HDG until 600 FT, turn left to intercept R182 ARI VOR direct to PUGOT to intercept AWY. Cross D13 S ARI at or above 3600 FT, PUGOT at or above 8000 FT, then according to ATC clearance.

DASA / SECCION AER-MAP

VAR 6,9° W 2024

ARICA
GNDC 121.9
TWR 118.5
APP 119.9



MNM Razón ASC:
MNM Climb Rate:
300 FT/NM TIL ARI VOR
- **LOLES 2:**
210 FT/NM BTN ARI-LOLES
- **ERISO 3J:**
300 FT/NM BTN ARI-ERISO

Altitud de Transición 10000FT
Transition Altitude 10000FT

No se ajusta a escala / Not to scale

LOLES 2 / ERISO 3J RWY20

DEP RWY 20: Ascender en R206 ARI VOR hasta 5500 FT, viraje derecha para interceptar R235 (TR055°) directo a ARI VOR. Cruzar ARI VOR FL120 o superior, luego...

TAKE-OFF RWY 20: Climb via R206 ARI VOR until 5500 FT, right turn to intercept R235 (TR055°) direct to ARI VOR. Cross ARI VOR at or above FL120. then...

LOLES 2: Interceptar R055 ARI VOR directo a LOLES INT. Cruzar LOLES INT FL210 o superior, luego según autorización ATC.

LOLES 2: Intercept R055 ARI VOR direct to LOLES INT. Cross LOLES INT at or above FL210, then according to ATC clearance.

ERISO 3J: Viraje derecha para interceptar R097 ARI VOR directo a ERISO. Cruzar ERISO FL210 o superior, luego según autorización ATC.

ERISO 3J: Right turn to intercept R097 ARI VOR direct to ERISO. Cross ERISO at or above FL210, then according to ATC clearance.

DASA / SECCION AIB-MAP

VAR 5.9° W 2024

ARICA
 ARI
 D 116.5
 18°22'10"S 70°20'47"W
 88 FT

ARICA
 GNDC 121.9
 TWR 118.5
 APP 119.9

MNM Razón ASC:
 MNM Climb Rate:
 270 FT/NM TIL D20

AZAPA 3

LOBAG 3K

8000'
PUGOT

10000'
LOBAG

Altitud de Transición 10000FT
 Transition Altitude 10000FT

Not to scale / No se ajusta a escala

LOBAG 3K / AZAPA 3 RWY20

LOBAG 3K: Ascender en RWY HDG hasta 600 FT, luego viraje izquierda para interceptar R158 ARI VOR hasta D20, luego viraje derecha para interceptar R180 ARI directo a LOBAG para interceptar AWY. Cruzar D13S ARI VOR/DME 3600 FT o superior, D20S 6000 FT o superior, LOBAG 10000 FT o superior, luego según autorización ATC.

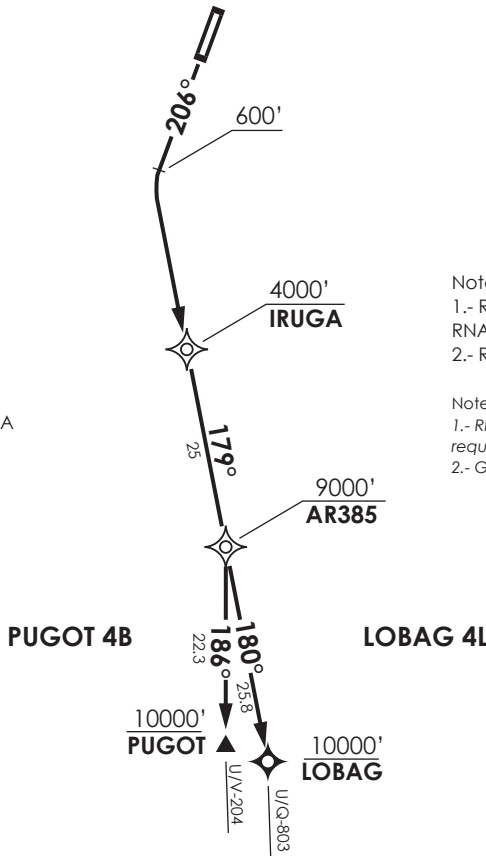
LOBAG 3K: Climb via RWY HDG until 600 FT, then left turn to intercept R158 ARI VOR until D20, then turn right to intercept R180 ARI direct to LOBAG to intercept AWY. Cross D13S ARI VOR/DME at or above 3600 FT, D20S at or above 6000 FT, LOBAG at or above 10000 FT then according to ATC clearance.

AZAPA 3: Ascender en RWY HDG hasta 600 FT, luego viraje izquierda para interceptar R158 ARI VOR hasta D20, luego viraje derecha para interceptar AWY U/V-204. Cruzar D13S ARI VOR/DME 3600 FT o superior, D20S 6000 FT o superior, PUGOT 8000 FT o superior, luego según autorización ATC.

AZAPA 3: Climb via RWY HDG until 600 FT, then left turn to intercept R158 ARI VOR until D20, then turn right to intercept AWY U/V-204. Cross D13S ARI VOR/DME at or above 3600 FT, D20S at or above 6000 FT, PUGOT at or above 8000 FT, then according to ATC clearance.

VAR 6° W 2024

MNM Razón ASC:
 MNM Climb Rate:
 270 FT/NM TIL IRUGA



ARICA
 GNDC 121.9
 TWR 118.5
 APP 119.9

Notas
 1.- Requiere aprobación
 RNAV 1 ó RNP1
 2.- Requiere GNSS

Notes
 1.- RNAV 1 or RNP 1 approval
 required
 2.- GNSS required

Altitud de Transición 10000 FT
 Transition Altitude 10000 FT

No se ajusta a escala / Not to scale

LOBAG 4L / PUGOT 4B RNAV RWY20

LOBAG 4L: Ascender en TR206° hasta 600 FT, viraje izquierda para continuar via IRUGA - AR385 - LOBAG para interceptar AWY. Cruzar IRUGA 4000 FT o superior, AR385 9000 FT o superior, LOBAG 10000 FT o superior.

LOBAG 4L: Climb on TR 206° until 600 FT, left turn to continue via IRUGA - AR385 - LOBAG to intercept AWY. Cross IRUGA at or above 4000 FT, AR385 at or above 9000 FT, LOBAG at or above 10000 FT.

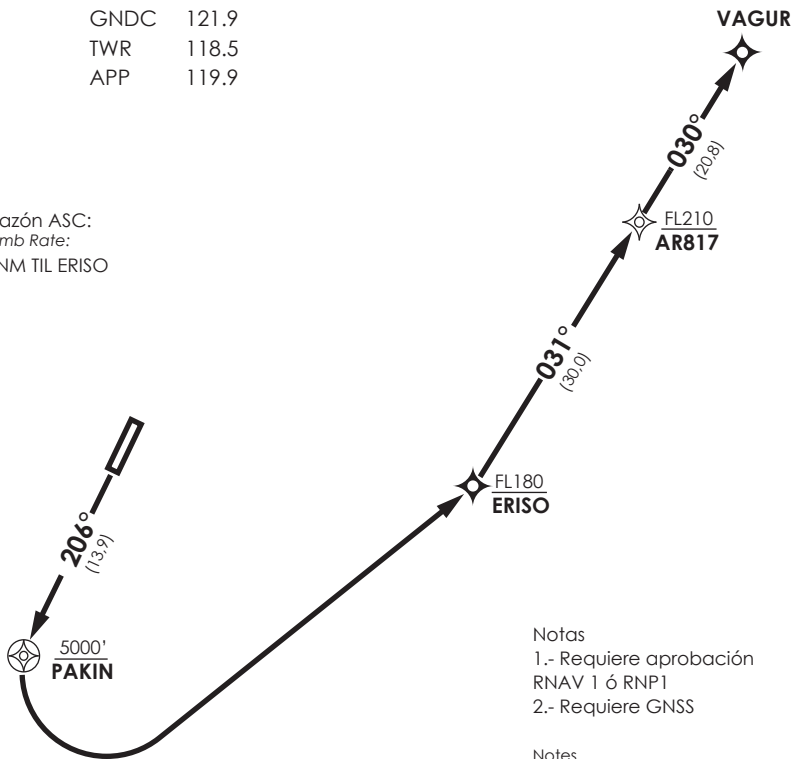
PUGOT 4B: Ascender en TR206° hasta 600 FT, viraje izquierda para continuar via IRUGA - AR385 - PUGOT para interceptar AWY. Cruzar IRUGA 4000 FT o superior, AR385 9000 FT o superior, PUGOT 10000 FT o superior.

PUGOT 4B: Climb on TR 206° until 600 FT, left turn to continue via IRUGA - AR385 - PUGOT to intercept AWY. Cross IRUGA at or above 4000 FT, AR385 at or above 9000 FT, PUGOT at or above 10000 FT

VAR 6.9° W 2024

ARICA
 GNDC 121.9
 TWR 118.5
 APP 119.9

MNM Razón ASC:
 MNM Climb Rate:
 350 FT/NM TIL ERISO



Notas
 1.- Requiere aprobación RNAV 1 ó RNP1
 2.- Requiere GNSS

Notas
 1.- RNAV 1 or RNP 1 approval required
 2.- GNSS required

Altitud de Transición 10000 FT
 Transition Altitude 10000 FT

No se ajusta a escala / Not to scale

VAGUR 3 RNAV RWY20

Ascender en TR 206° hasta PAKIN, viraje izquierda directo a ERISO, luego continuar via AR817 - VAGUR para interceptar AWY. Cruzar PAKIN 5000 FT o superior, ERISO FL180 o superior, AR817 FL210 o superior, luego según autorización ATC.

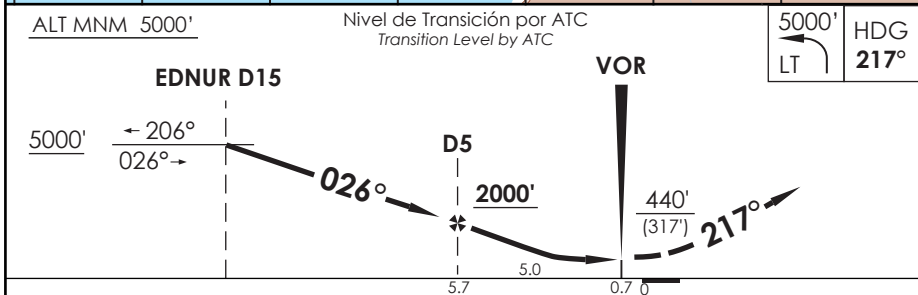
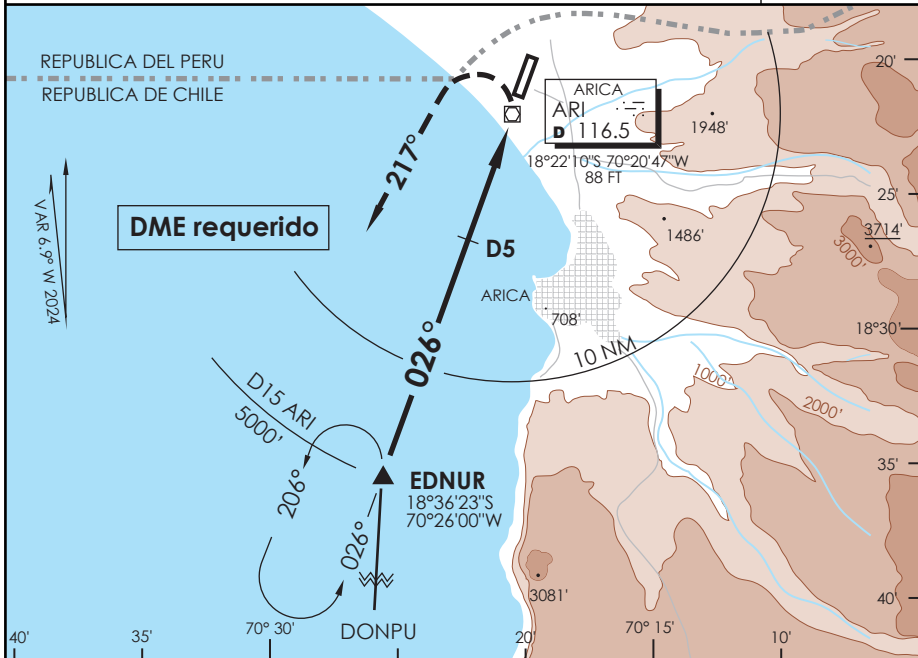
Climb on TR 206° until PAKIN, left turn direct to ERISO, then continue via AR817 - VAGUR to intercept AWY. Cross PAKIN at or above 5000FT, ERISO at or above FL180, AR817 at or above FL210, then according to ATC clearance.

DASA / SECCION AIB-MAP

AP. CHACALLUTA
ARICA - CHILE

SCAR IAC 1
VOR Z Rwy 02

| | | | | | |
|---|-------------------------------|----------------------------|-------------------------------|---|---------------|
| APP ARICA Arica Approach | 119.9 | TORRE ARICA Arica Tower | 118.5 | CONTROL TERRESTRE Ground Control | 121.9 |
| VOR ARI 116.5 | FINAL APCH CRS 026° | MNM ALT D5 2000' | MDA (H) 440' (317') | AD Elev THR 02 Elev 166' 123' | 11000 FT |
| APCH FRUSTRADA: Viraje izquierda HDG 217° en ascenso para 5000', luego según autorización ATC. Missed Apch: Left turn HDG 217° climbing to 5000', then according to ATC clearance. | | | | | |
| | | | | | MSA 25 NM ARI |



| | | | |
|---|-----------------------------------|-------------------------------|-------------------------|
| C A T E G O R I A | DIRECTO RWY 02 Straight in RWY 02 | CIRCULANDO ESTE Circling East | ALTN Alternate Minimums |
| | MDA 440' (317') | | |
| | A | 640' (474') | 1.6 Km |
| | B | 960' (794') | |
| | C | 1120' (954') | 4.8 Km |
| D | 1460' (1294') | | |
| 1.6 Km | | VER PAG. GEN 2.19 | |

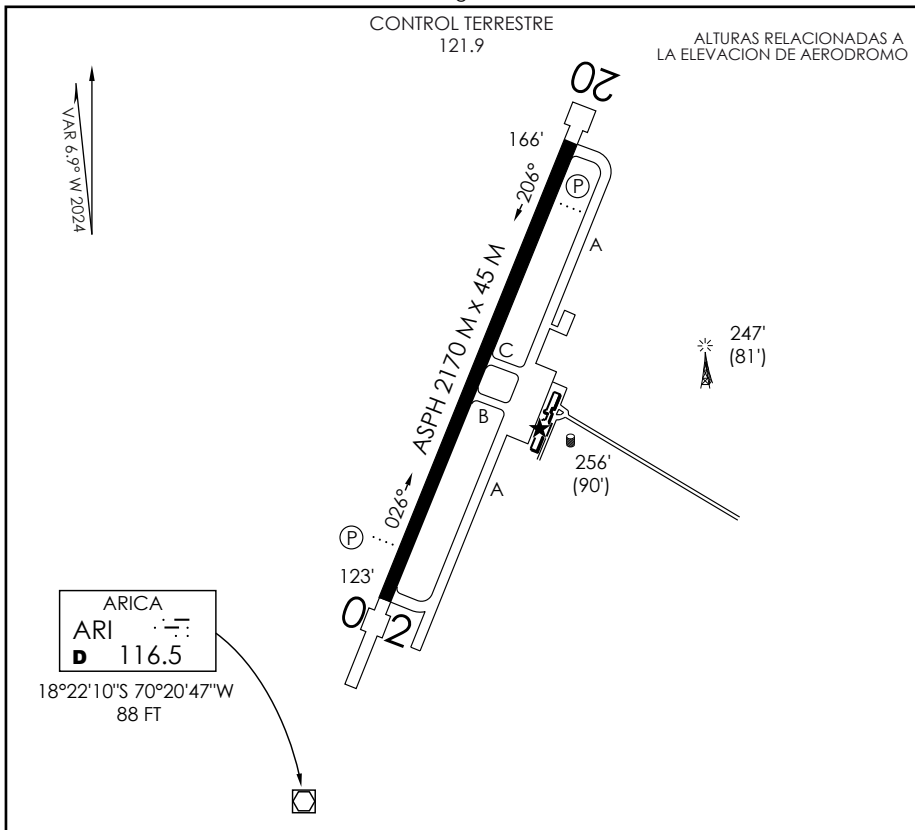
| | | | | | |
|----------------------|------|------|------|------|------|
| Veloc. Terrestre Kts | 80 | 100 | 120 | 140 | 160 |
| Angulo DES 3,02° PFM | 427' | 534' | 641' | 748' | 855' |
| FAF to MAP 5.0 NM | 3:45 | 3:00 | 2:30 | 2:08 | 1:52 |

CAMBIO: VAR
 Change: VAR

DGAC AMDT 98

28 NOVIEMBRE 2024

DASA / SECCION AIS-WAP



INFORMACION ADICIONAL DE LA PISTA

| PISTA | ILUMINACION | RESISTENCIA | DATOS OPERACION DE PISTA DISPONIBLE | | | | |
|-------|------------------|-----------------|-------------------------------------|--------|--------|--------|-------|
| | | | TORA | TODA | ASDA | LDA | ANCHO |
| 02 | REDL (P) 3° | PCR 520/F/A/X/T | 2170 m | 2290 m | 2170 m | 2170 m | 45 m |
| 20 | REDL REIL (P) 3° | | 2170 m | 2570 m | 2170 m | 2170 m | 45 m |

SERVICIOS DISPONIBLES

POLICIA INTERNACIONAL ADUANA SANIDAD METEOROLOGIA S.E.I.

MINIMOS DE DESPEGUE

HORA OPERACION

CONSULTE GEN parte 6 y NOTAMS

| AERONAVES | PISTA | | * CONSULTE Pag. 2.13 - Tabla 2.2 ■ OPS DE ACFT CON ACN SUPERIOR A LOS INDICADOS, DEBE SOLICITARSE CLR A LA DGAC. TWYs: PCR 440 F/A/X/T APN: PCR 640 R/A/W/T APN Gr1: PCR 350 F/A/X/T |
|--------------------------------|-------------------------------|-------------------------------|--|
| | 02 | 20 | |
| MONOMOTOR/REACTOR/TURBO | * | * | |
| BIMOTOR/REACTOR/TURBO | 1.6 km * | 1.6 km * | |
| TRES O MAS MOTOR/REACTOR/TURBO | 0.8 km * | 0.8 km * | |
| SIN ALTERNATIVA POST DESPEGUE | MINIMOS ATERRIZAJE AD. SALIDA | MINIMOS ATERRIZAJE AD. SALIDA | |

SCAR INFO RWY

DGAC

28 NOVIEMBRE 2024

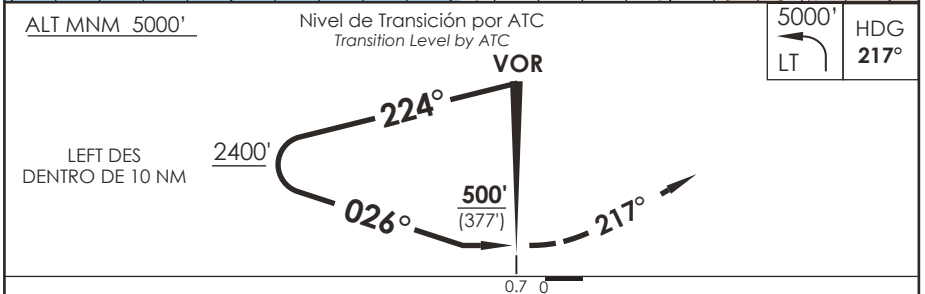
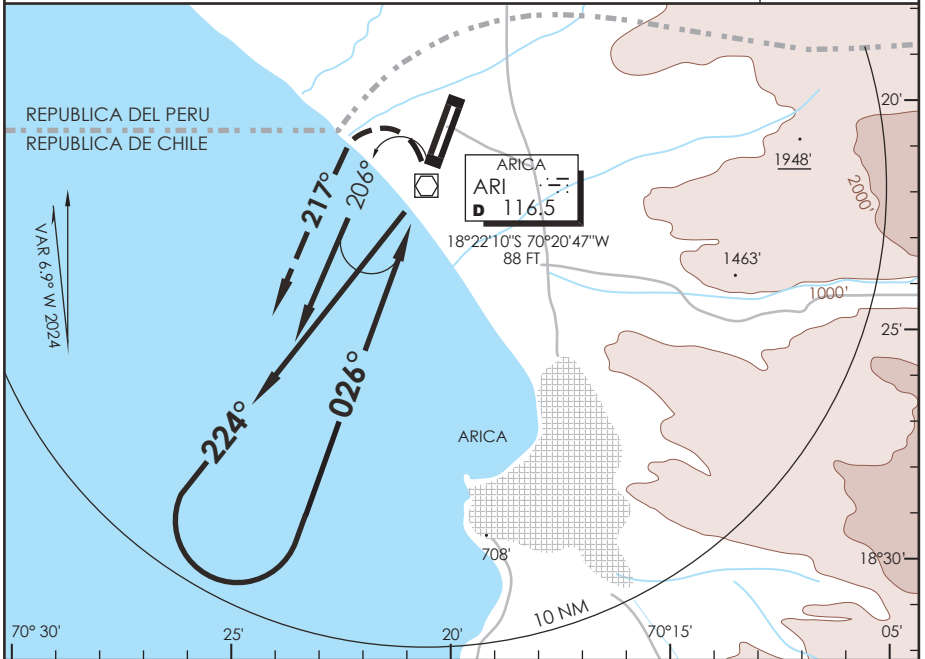
CAMBIO: PCR / VAR
Change: PCR / VAR

AMDT 98

AP. CHACALLUTA
ARICA - CHILE

SCAR IAC 2
VOR Y Rwy 02

| | | | | | |
|--|-------------------------------|----------------------------|-------------------------------|--|-------------------------------|
| APP ARICA Arica Approach | 119.9 | TORRE ARICA Arica Tower | 118.5 | CONTROL TERRESTRE Ground Control | 121.9 |
| VOR ARI 116.5 | FINAL APCH CRS 026° | WO FAF | MDA (H) 500' (377') | AD Elev 166' THR 02 Elev 123' | 11000 FT MSA 25 NM ARI |
| APCH FRUSTRADA: Viraje izquierda HDG 217° en ascenso para 5000', luego viraje izquierda directo ARI VOR e ingreso HLDG 026° izquierdo. Missed Apch: Left turn HDG 217° climbing to 5000', then left turn direct to ARI VOR and enter on HLDG 026° left. | | | | | |



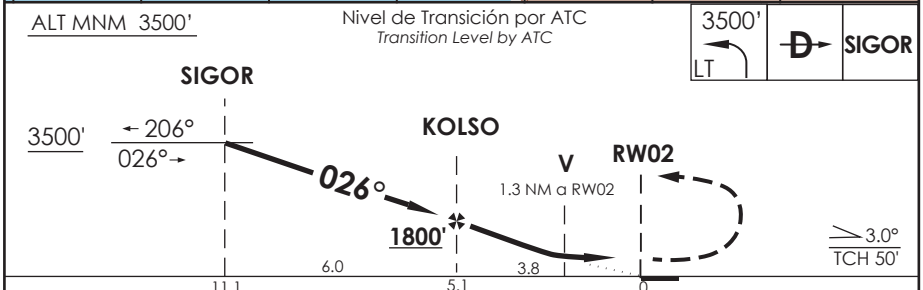
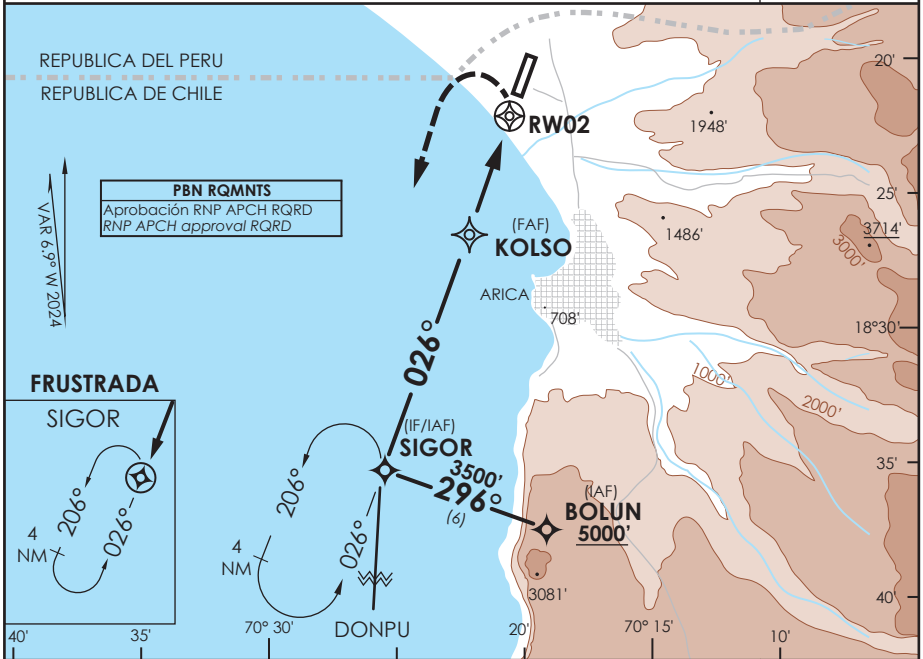
| | | | |
|--|-----------------------------------|-------------------------------|-------------------------|
| C R O Q U E N A D O | DIRECTO RWY 02 Straight in RWY 02 | CIRCULANDO ESTE Circling East | ALTN Alternate Minimums |
| | MDA 500' (377') | | |
| | A | 1.6 Km | 640' (474') |
| | B | | 960' (794') |
| C | | 1120' (954') | 1.6 Km |
| D | 2.0 Km | 1460' (1294') | |
| | | | VER PAG. GEN 2.19 |

DASA / SECCION AIG-MAP

AP. CHACALLUTA
ARICA - CHILE

SCAR IAC 3
RNP Rwy 02 (LNAV only)

| | | | | | |
|--|-------------------------------|-------------------------------|------------------------------------|-------------------------------------|----------------------------|
| APP ARICA Arica Approach | 119.9 | TORRE ARICA Arica Tower | 118.5 | CONTROL TERRESTRE Ground Control | 121.9 |
| RNP | FINAL APCH CRS 026° | MNM ALT KOLSO 1800' | LNAV MDA (H) 580' (457') | AD Elev THR 02 Elev | 166' 123' |
| APCH FRUSTRADA: Viraje izquierda en ascenso para 3500' directo SIGOR Ingreso HLDG 026° izquierdo, luego según autorización ATC. | | | | | 11000 FT |
| Missed Apch: Left turn climbing to 3500' direct SIGOR, enter on HLDG 026° left, then according to ATC clearance. | | | | | |
| | | | | | MSA 25 NM RW02 |



| | | | | | |
|-----------------------|--|-------------------------------------|----------------------------|----------------------|------|
| C A B C D | DIRECTO RWY 02 <i>Straight in RWY 02</i> | CIRCULANDO ESTE Circling East | ALTN Alternate Minimums | | |
| | LNAV MDA 580' (457') | | | | |
| | 1.6 Km | 640' (474') 960' (794') | 1.6 Km | | |
| | 2.4 Km | 1120' (954') 1460' (1294') | 4.8 Km | | |
| | | | | VER PAG. GEN 2.19 | |
| Veloc. Terrestre Kts | 80 | 100 | 120 | 140 | 160 |
| Angulo DES 3.0° FPM | 425' | 531' | 637' | 743' | 849' |
| MAPt en RW02 | | | | | |

DASA / SECCION AIS-WAP

PLANO DE ESTACIONAMIENTO
Y ATRAQUE DE AERONAVES - OACI

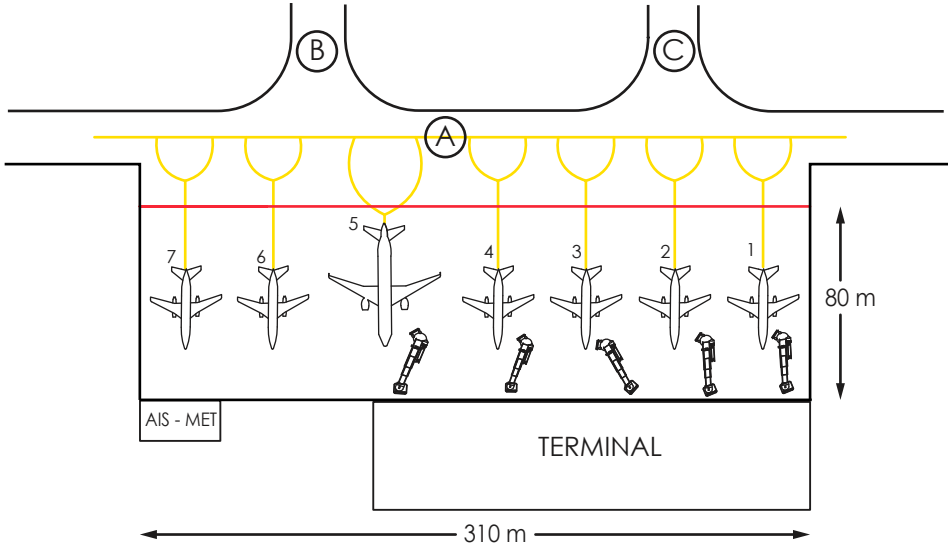
ARICA / CHILE
AP. CHACALLUTA



DECLINACION MAGNETICA 6.9° W 2024
Magnetic Variation

ELEVACION
PLATAFORMA
45 m.

| | |
|-------------------------------|--------------|
| CONTROL TERRESTRE 121.9 | TWR 118.5 |
|-------------------------------|--------------|

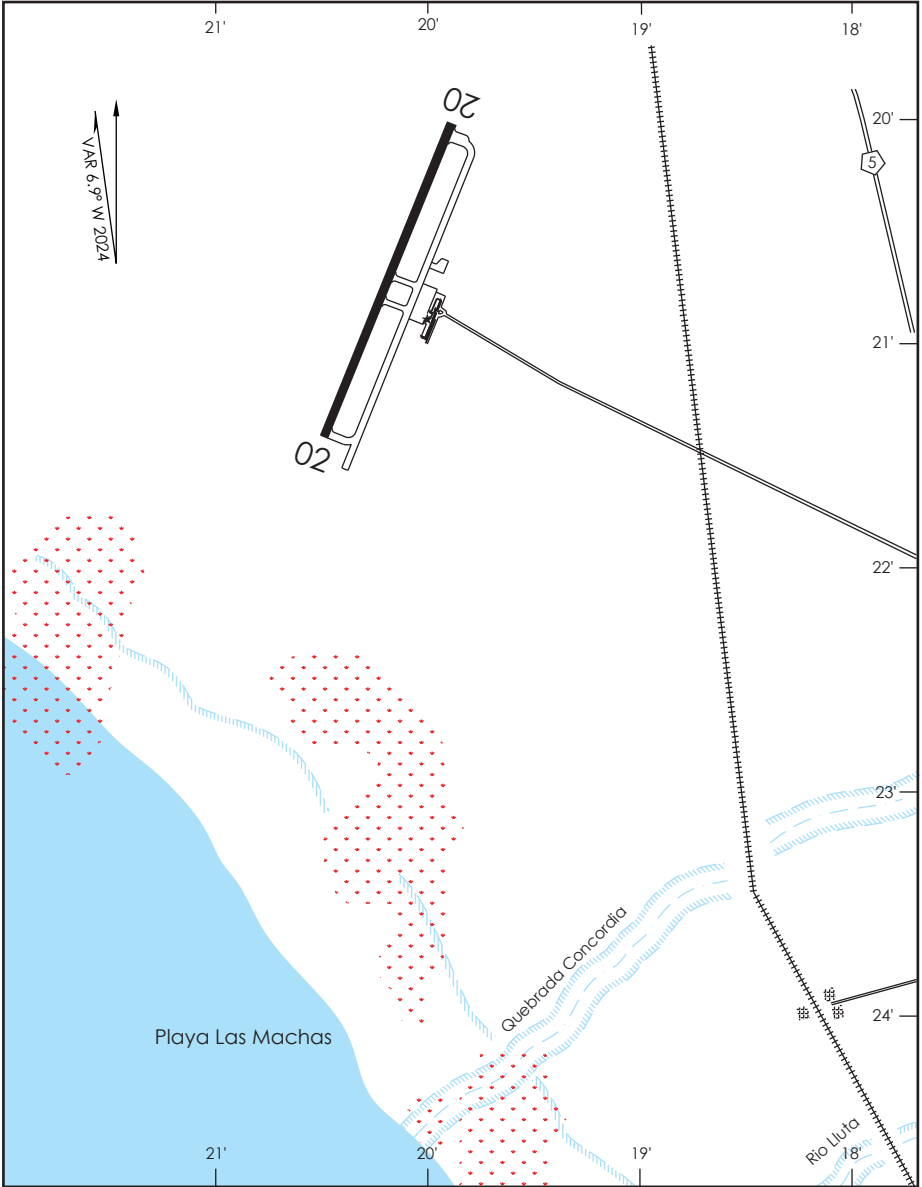


COORD. ESTACIONAMIENTO AERONAVES

| | | |
|---|----------------|-----------------|
| 1 | S 18°20'54.95" | W 070°20'09.46" |
| 2 | S 18°20'56.16" | W 070°20'09.95" |
| 3 | S 18°20'57.27" | W 070°20'10.39" |
| 4 | S 18°20'58.55" | W 070°20'10.79" |
| 5 | S 18°21'00.19" | W 070°20'11.28" |
| 6 | S 18°21'01.16" | W 070°20'11.95" |
| 7 | S 18°21'02.98" | W 070°20'12.40" |

1. Resistencia Plataforma PCN 63 R/A/X/T
2. Estacionamientos 1, 2, 3, 4 y 5 con puentes de embarque
3. Estacionamientos 6 y 7 remotos





Concentración Urbana



Concentración de aves.
Áreas de alimentación y
reposo



DASA / SECCIÓN AIS-MAP

**ARICA / AP CHACALLUTA - SCAR
LISTA DE COORDENADAS**

| PUNTO DE RECORRIDO (WPT) | LATITUD | LONGITUD |
|---------------------------------|----------------|-----------------|
| RW02 | 18°21'28,17" S | 70°20'31,71" W |
| RW20 | 18°20'21,24" S | 70°20'07,18" W |
| AR220 | 18°32'5,97" S | 70°13'32,69" W |
| AR270 | 18°30'13,28" S | 70°8'39,91" W |
| AR385 | 19°0'2,66" S | 70°16'7,6" W |
| AR390 | 18°25'42,38" S | 69°56'57,65" W |
| AR817 | 17°54'33,73" S | 69°35'12,98" W |
| ATIPA | 18°6'54,41" S | 69°42'34,02" W |
| BOLUN | 18°33'58,51" S | 70°18'25,58" W |
| DONPU | 18°59'23" S | 70°29'38" W |
| ERISO | 18°22'10" S | 69°47'49" W |
| IRUGA | 18°35'10,4" S | 70°19'39,43" W |
| ISASO | 17°50'25,92" S | 69°36'54,88" W |
| KOLSO | 18°26'18,12" S | 70°22'18,04" W |
| LOBAG | 19°25'42" S | 70°12'45" W |
| PAKIN | 18°34'40,08" S | 70°25'22,37" W |
| PUGOT | 19°22'28" S | 70°15'35" W |
| SIGOR | 18°31'59,21" S | 70°24'23,26" W |
| SIRAM | 19°26'19" S | 70°36'5" W |
| VAGUR | 17°35'22" S | 69°26'30" W |

ARICA / AP CHACALLUTA - SCAR STAR 2

| PROCEDIMIENTOS DE LLEGADA RNAV / RNAV ARRIVAL PROCEDURES | | | | | | | | | |
|--|-----------|--------------------------|----|-------------------|-----------|------|----------|----------------|----------------------|
| (Esta información complementa a las cartillas publicadas en la AIP Chile VOL II / This information complements the charts published in the AIP Chile VOL II) | | | | | | | | | |
| STAR 2 RNAV VAGUR 4B | | | | | | | | | |
| NR SERIE | PATH TERM | PUNTO DE RECORRIDO (WPT) | FO | COURSE/TRACK °M/T | DIST (NM) | TURN | ALTITUD | REST VELOCIDAD | NAV |
| 10 | IF | VAGUR | - | - | - | - | FL210+ | - | RNAV 1 ó RNP 1 |
| 20 | TF | ISASO | - | 220° (213,50) | 18 | - | FL200+ | - | |
| 30 | TF | ATIPA | - | 205° (198,21) | 17,28 | - | FL170+ | - | |
| 40 | TF | ERISO | - | 205° (198,13) | 16 | RT | FL150+ | - | |
| 50 | TF | AR390 | - | 255° (247,90) | 9,38 | - | FL120+ | - | |
| 60 | TF | AR270 | - | 255° (247,96) | 12 | - | 7000FT+ | - | |
| 70 | TF | AR220 | - | 255° (248,01) | 5 | - | 6000FT+ | - | |
| 80 | TF | BOLUN | - | 255° (248,02) | 5 | - | 5000FT+ | - | |
| STAR 2 RNAV SIRAM 2B | | | | | | | | | |
| NR SERIE | PATH TERM | PUNTO DE RECORRIDO (WPT) | FO | COURSE/TRACK °M/T | DIST (NM) | TURN | ALTITUD | REST VELOCIDAD | NAV |
| 10 | IF | SIRAM | - | - | - | - | 8000 FT+ | - | RNAV 1 ó RNP 1 |
| 20 | TF | DONPU | - | 020° (012,76) | 27,52 | - | 8000 FT+ | - | |
| 30 | TF | SIGOR | - | 017° (010,30) | 27,74 | - | 3500 FT+ | - | |

ARICA / AP CHACALLUTA - SCAR SID 4

| PROCEDIMIENTOS DE SALIDA RNAV / RNAV DEPARTURE PROCEDURES | | | | | | | | | |
|--|-----------|--------------------------|----|----------------------|-----------|------|-----------|----------------|----------------------|
| (Esta información complementa a las cartillas publicadas en la AIP Chile VOL II / This information complements the charts published in the AIP Chile VOL II) | | | | | | | | | |
| SID 4 RNAV LOBAG 4L | | | | | | | | | |
| NR SERIE | PATH TERM | PUNTO DE RECORRIDO (WPT) | FO | COURSE/TRACK °M/T | DIST (NM) | TURN | ALTITUD | REST VELOCIDAD | NAV |
| 10 | CA | - | - | 206° (199,28) | - | - | 600 FT+ | - | RNAV 1 ó RNP 1 |
| 20 | DF | IRUGA | - | - | - | LT | 4000 FT+ | - | |
| 30 | TF | AR385 | - | 179° (172,31) | 25 | - | 9000 FT+ | - | |
| 40 | TF | LOBAG | - | 180° (172,88) | 25,76 | - | 10000 FT+ | - | |
| SID 4 RNAV PUGOT 4B | | | | | | | | | |
| NR SERIE | PATH TERM | PUNTO DE RECORRIDO (WPT) | FO | COURSE/TRACK °M/T | DIST (NM) | TURN | ALTITUD | REST VELOCIDAD | NAV |
| 10 | CA | - | - | 206° (199,28) | - | - | 600 FT+ | - | RNAV 1 ó RNP 1 |
| 20 | DF | IRUGA | - | - | - | LT | 4000 FT+ | - | |
| 30 | TF | AR385 | - | 179° (172,31) | 25 | - | 9000 FT+ | - | |
| 40 | TF | PUGOT | - | 186° (178,68) | 22,34 | - | 10000 FT+ | - | |

ARICA / AP CHACALLUTA - SCAR SID 5

| PROCEDIMIENTOS DE SALIDA RNAV / RNAV DEPARTURE PROCEDURES | | | | | | | | | |
|--|--------------|-----------------------------|----|----------------------|--------------|------|----------|-------------------|----------------------|
| (Esta información complementa a las cartillas publicadas en la AIP Chile VOL II / This information complements the charts published in the AIP Chile VOL II) | | | | | | | | | |
| SID 5 RNAV VAGUR 3 RWY 20 | | | | | | | | | |
| NR SERIE | PATH TERM | PUNTO DE RECORRIDO (WPT) | FO | COURSE/TRACK °M/T | DIST (NM) | TURN | ALTITUD | REST VELOCIDAD | NAV |
| 10 | CF | PAKIN | Y | 206° (199,28) | 13,93 | - | 5000 FT+ | - | RNAV 1 ó RNP 1 |
| 20 | DF | ERISO | - | - | - | LT | FL180+ | - | |
| 30 | TF | AR817 | - | 031° (023,61) | 30 | - | FL210+ | - | |
| 40 | TF | VAGUR | - | 030° (023,54) | 20,85 | - | - | - | |

ARICA / AP CHACALLUTA - SCAR IAC 3

| PROCEDIMIENTOS DE APROXIMACIÓN RNP / RNP APPROACH PROCEDURES | | | | | | | | | | | | |
|--|----------|-----------|--------------------------|----|-------------------|-----------|------|----------|----------|------|-------|-----|
| (Esta información complementa a las cartillas publicadas en la AIP Chile VOL II / This information complements the charts published in the AIP Chile VOL II) | | | | | | | | | | | | |
| IAC 3 RNP RWY 02 (LNAV only) | | | | | | | | | | | | |
| NR SERIE | TRANS ID | PATH TERM | PUNTO DE RECORRIDO (WPT) | FO | COURSE/TRACK °M/T | DIST (NM) | TURN | ALTITUD | REST VEL | VPA | TCH | NAV |
| 10 | | IF | (IAF/IF) SIGOR | - | - | - | - | 3500 FT+ | - | - | - | 1 |
| 20 | | TF | (FAF) KOLSO | - | 026° (019,29) | 6 | - | 1800 FT+ | - | - | - | 1 |
| 30 | | TF | (MAPt) RW02 | Y | 026° (019,29) | 5,1 | - | 173 FT+ | - | 3,0° | 50 FT | 0,3 |
| 40 | | DF | SIGOR | Y | - | - | LT | 3500 FT+ | - | - | - | 1 |
| 50 | | HM | (MAHF) SIGOR | - | 026° (019,29) | 4 | - | 3500 FT+ | - | - | - | 1 |
| 10 | BOLUN | IF | (IAF) BOLUN | - | - | - | - | 5000 FT+ | - | - | - | 1 |
| 20 | BOLUN | TF | (IAF/IF) SIGOR | - | 296° (289,26) | 6 | - | 3500 FT+ | - | - | - | 1 |